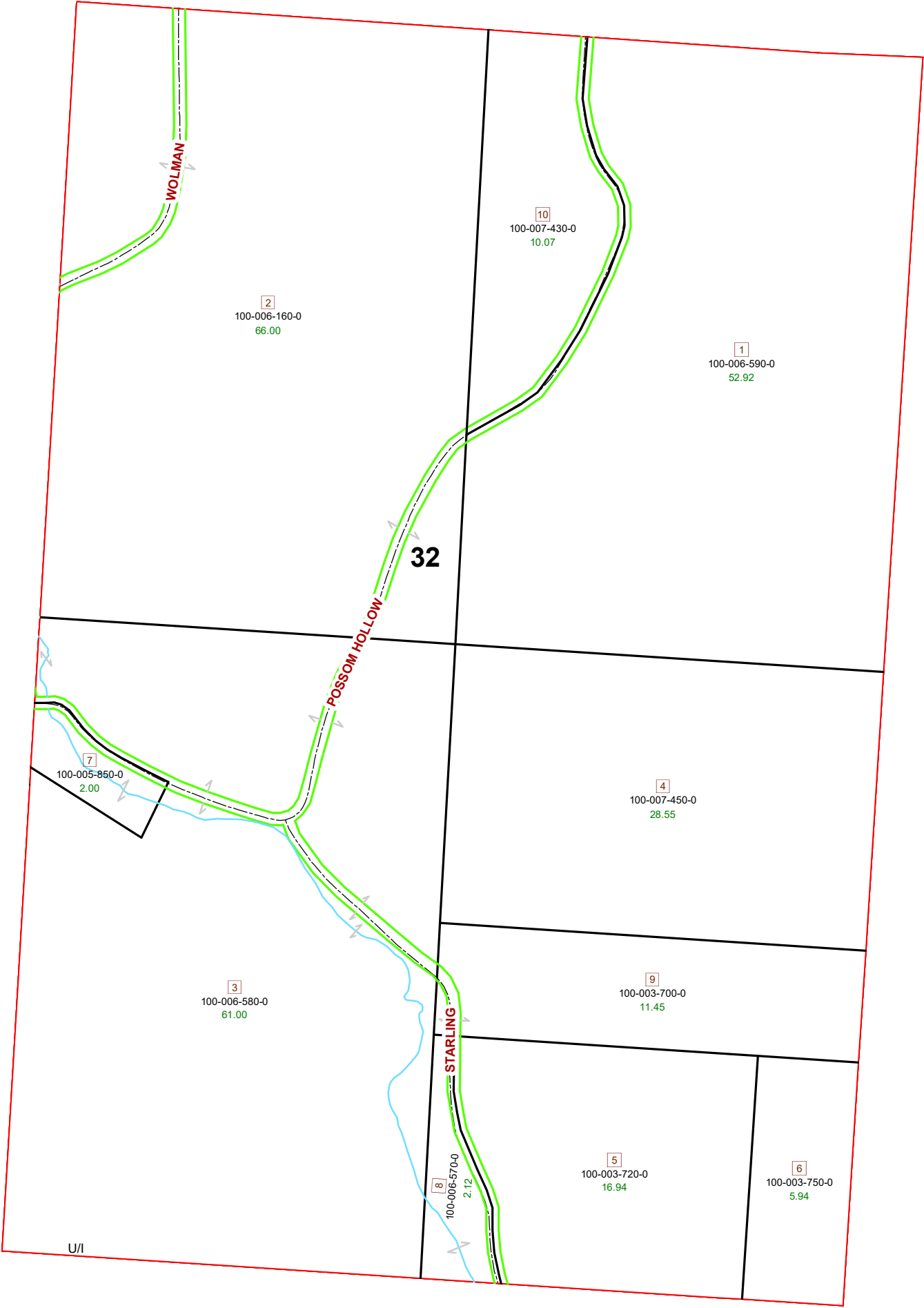


# MARION TOWNSHIP FRACTION 32 R12 TWP 8 MORGAN COUNTY, OH



PIN	Owner	VOL	PAGE	LegalDescr	Acres
100-003-750-0	JANES CLAUDE A TRUSTEE	OR187	780	R12 T08 S00 FR 32	5.94
100-003-720-0	JANES CLAUDE A TRUSTEE	OR187	780	R12 T08 S00 FR 32	16.94
100-003-700-0	JANES CLAUDE A TRUSTEE	OR187	780	R12 T08 S00 FR 32	11.45
100-006-570-0	KEIFER KAREN KAYE	OR217	2423	R12 T08 S32 SD 8	2.12
100-006-580-0	KEIFER KAREN KAYE	OR217	2423	R12 T08 S00 FR 32	61
100-006-590-0	KEIFER KAREN KAYE	OR217	2423	R12 T08 S00 FR 32	52.924
100-007-430-0	MCELFRESH JOSHUA E & KAYLA	OR203	556	R12 T08 S00 FR 32	10.076
100-006-160-0	NEWTON WILLIAM HOWARD	D.V 189	522	R12 T08 S00 FR 32	66
100-005-850-0	ROBERTSON CLIFFORD H & PATRICIA A	OR87	225	R12 T08 S00 FR 32	2
100-007-450-0	SLISHER GEORGE D & MARLA K	OR11	236	R12 T08 S00 FR 32	28.55



Boundaries	
----- Hidden	----- ROW
----- Hydro	----- Section
----- Roads	----- Lot
----- County	----- Township
----- Parcel	----- Parcels

